

# Fire Spread Report

## Report Details

Report ID	2c292eb6-16f0-4a17-a87a-15cdf7b0a357	The fire near Merredin, Australia is predominantly surrounded by the Shrubland fuel type. The fire is predicted to spread mainly towards the northeast at 0.4 m/s. The weather forecast indicates 3.8 m/s wind primarily from the southwest with a fuel moisture content of 2%.
Created by	Zach Ricklefs	
Created at	2025, Dec 16	

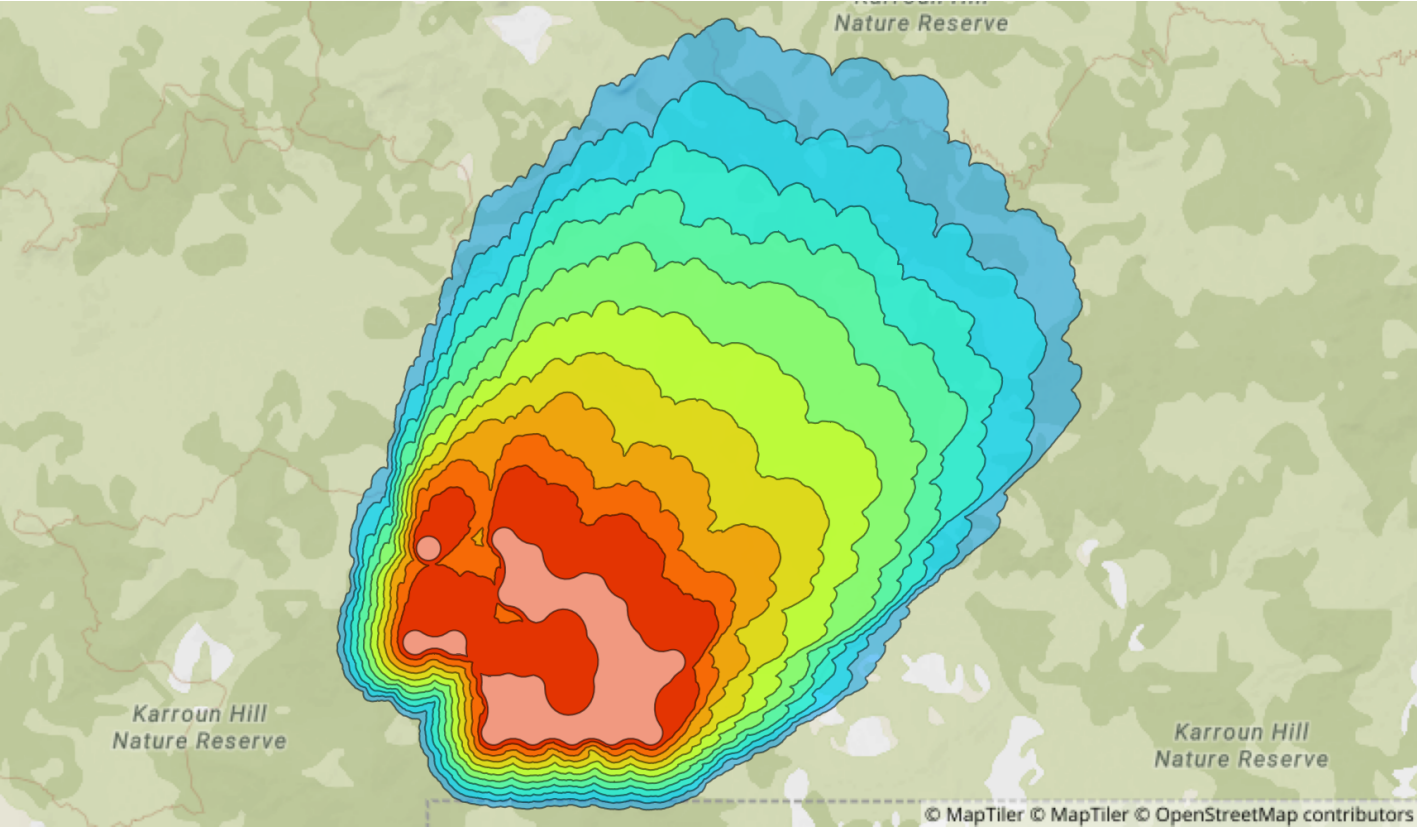
## Cluster Details

Cluster ID	Lifetime	First Hotspots	Last Hotspots
#90854019	1 day, 8 hours and 29 minutes	2025.12.15 07:44 (GMT+2)	2025.12.16 16:13 (GMT+2)

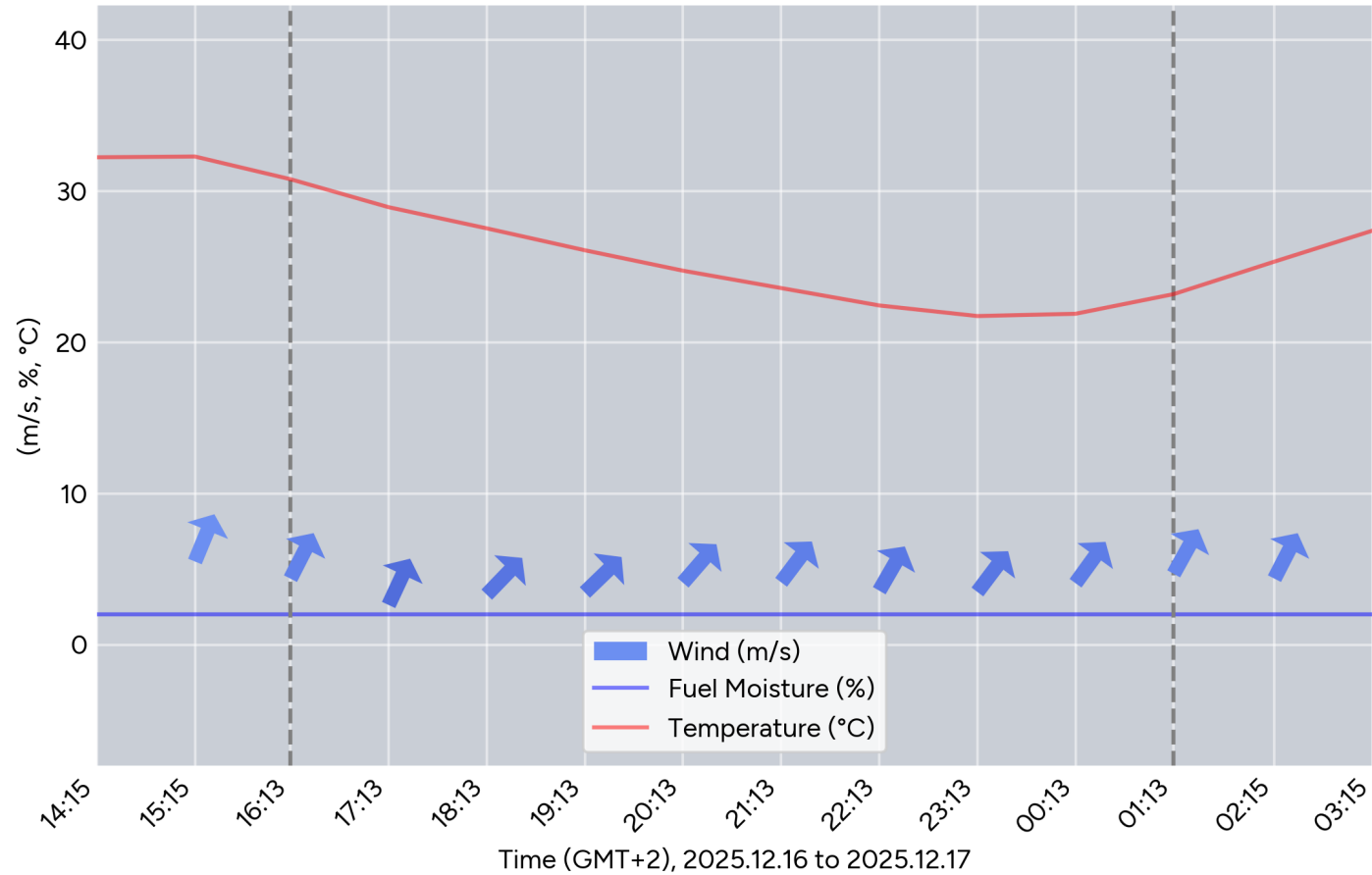
## Simulation Details

Location	Simulation Start	Forecast Range	Weather Model	Fuel Map
Merredin, Australia <a href="#">-30.1542, 118.1993 ↗</a>	2025.12.16 16:13 (GMT+2)	10 hours	OpenMeteo Best Match	ESA WorldCover 2021

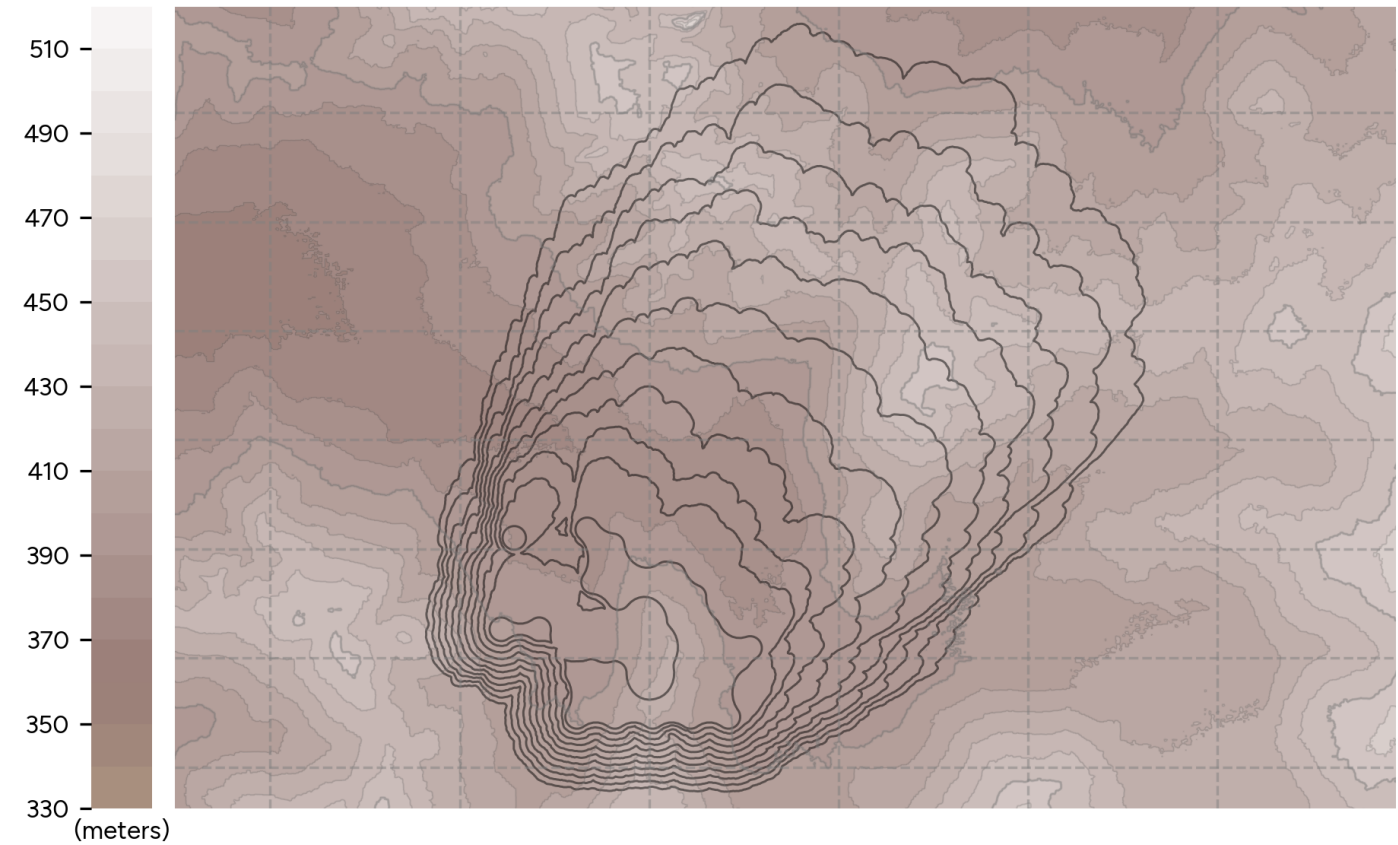
## Simulation Map



Weather Map



Elevation Map



Fuel Map

